
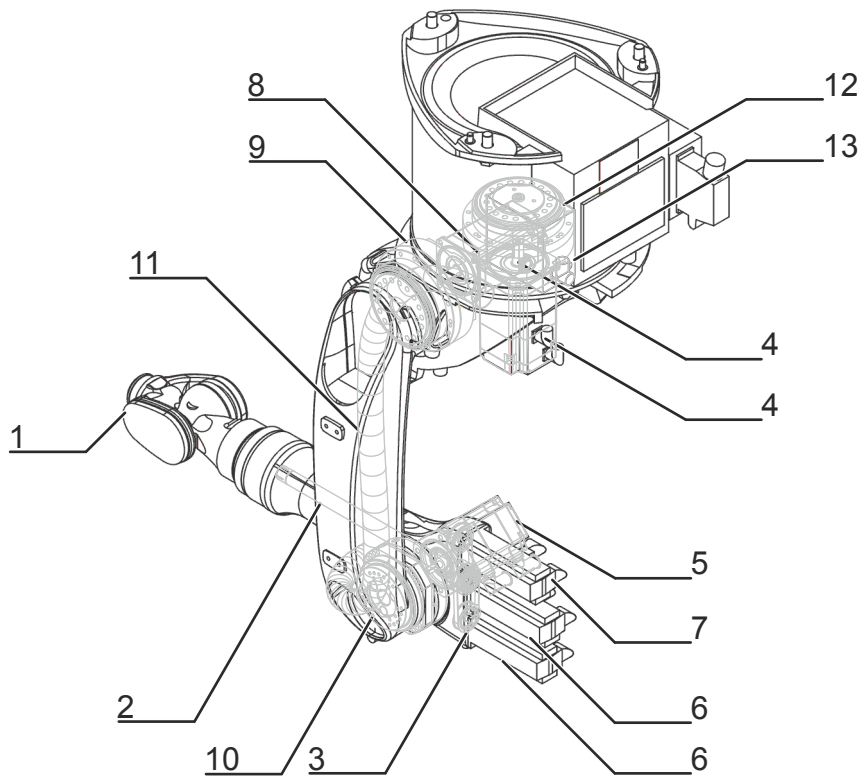


KUKA | Xpert

Identification number: AR8761

| | |
|------|---|
| 货号 | 0000-259-203 |
| 材料状态 | 60 - 客户服务 |
| 制造商 | KUKA Roboter |
| 产品图片 |  |

Spare parts



Spare parts graphic KR 20-3 C – schematic representation

| Pos. | Article number | Designation | Component |
|------|----------------|---------------------------------------|----------------------|
| 1 | 0000-262-455 | SPP ZH 16 II (VigoOil-SB150) | In-line wrist |
| 2 | 0000-213-219 | SPP Drive extrusion KR16-3 | Connecting shaft |
| 3 | 0000-213-263 | SPP set of belts for arm KR16-3 | Toothed belt |
| 4 | 0000-213-202 | SPP Motor D01/1FK7063 | Motor A1 Motor A2 |
| 5 | 0000-213-201 | SPP Motor D0/1FK7060 | Motor A3 |
| 6 | 0000-213-204 | SPP Motor E0/1FK7034 with pulley z=36 | Motor A4 Motor A5 |
| 7 | 0000-213-212 | SPP Motor E0/1FK7034 | Motor A6 |
| 8 | 0000-262-458 | SPP Gear RV-100N A1 (VigoOil) | Gear A1 |

| Pos. | Article number | Designation | Component |
|------|----------------|---------------------------------------|-----------|
| 9 | 0000-262-459 | SPP Gear RV-100N A2 (VigoOil) | Gear A2 |
| 10 | 0000-262-460 | SPP Gear RV-60N A3 standard (VigoOil) | Gear A3 |
| 11 | 0000-182-758 | KRC4 robot-cable set compl. KR6/16 | Cable set |
| 12 | 0000-246-872 | Resolver Digital Converter RDC | RDC |
| 13 | 0000-172-903 | Electronic Data Storage EDS | EDS |

Export to Excel 

Maintenance information

Gear oil



The quantity of oil drained depends on the draining time and the oil temperature. The refilling quantity is the quantity of oil that was drained from the gear unit at the correct operating temperature and with the correct draining time. This oil quantity must be determined. Only this quantity of oil may be used when refilling.

If less than 70 % of the specified oil quantity flows out, flush the gear unit with the determined quantity of drained oil once, then pour in the amount of oil that was drained. If less than 50% of the specified oil quantity flows out (e.g. inclined installation), the flushing operation must be repeated twice. During the flushing procedure, move the axis at jog velocity throughout the entire axis range.

The oil quantities specified in the table correspond to the oil quantities in the gear unit at first filling.

| Gear oil new filling quantity | |
|-------------------------------|--------|
| A1 | 0.54 l |
| A2 | 0.54 l |
| A3 | 0.23 l |
| A4 | 0.32 l |
| A5 | 0.16 l |
| A6 | 0.18 l |
| Gear oil refilling quantity | |
| A1 | 0.45 l |
| A2 | 0.50 l |
| A3 | 0.22 l |
| A4 | 0.31 l |
| A5 | 0.14 l |
| A6 | 0.14 l |

Toothed belt tension

| Toothed belt tension motor | |
|-----------------------------------|-------------|
| A4 | - |
| A5 | 260 ± 10 Hz |
| A6 | 260 ± 10 Hz |
| Toothed belt tension inline wrist | |
| A5 | - |
| A6 | - |

技术数据

基本数据

| | KR 20-3 C |
|-----------------------|---|
| 轴数 | 6 |
| 可控制的轴数 | 6 |
| 工作空间体积 | 14.5 m ³ |
| 位姿重复精度 (ISO 9283) | ± 0.05 mm |
| 重量 | 约 254 kg |
| 额定负荷 | 20 kg |
| 最大负载能力 | - |
| 最大运动范围 | 1611 mm |
| 防护等级 (IEC 60529) | IP65 |
| 机器人腕部防护等级 (IEC 60529) | IP65 |
| 噪声等级 | < 75 dB (A) |
| 安装位置 | 屋顶 |
| 占地面积 | 575 mm x 535 mm |
| 运动系统安装面布孔图 | C500 |
| 允许倾角 | ≤ 0° |
| 标准色 | 活动部件： 库卡橙色 2567; 底座盖板： 黑色 (RAL 9005) |
| 控制系统 | KR C4 |
| 变压器名称 | KR C4: KR20_3 C4 CLG ZH16_2 |

环境条件

| | |
|-----------------------|--------------------------------|
| 湿度等级 (EN 60204) | - |
| 环境条件分类 (EN 60721-3-3) | 3K3 |
| 环境温度 | |
| 运行时 | 5 °C 至 55 °C (278 K 至 328 K) |
| 仓储和运输时 | -40 °C 至 60 °C (233 K 至 333 K) |

轴数据

| | |
|----------|----------------|
| 运动范围 | |
| A1 | ±185 ° |
| A2 | -155 ° / 35 ° |
| A3 | -130 ° / 154 ° |
| A4 | ±350 ° |
| A5 | ±130 ° |
| A6 | ±350 ° |
| 额定负载时的速度 | |
| A1 | 156 °/s |
| A2 | 156 °/s |
| A3 | 156 °/s |
| A4 | 330 °/s |
| A5 | 332 °/s |
| A6 | 616 °/s |

负载能力

| | |
|----------------------------------|-----------------------|
| 额定负荷 | 20 kg |
| 最大负载能力 | - |
| 法兰 I_x 额定质量转动惯量 | 0.36 kgm ² |
| 法兰 I_y 额定质量转动惯量 | 0.36 kgm ² |
| 法兰 I_z 额定质量转动惯量 | 0.36 kgm ² |
| 底座的额定附加负载 | 0 kg |
| 底座的最大附加负载 | 0 kg |
| 转盘的额定附加负载 | 0 kg |
| 旋转机构的最大附加负载 | 20 kg |
| 大臂的额定附加负载 | 0 kg |
| 大臂的最大附加负载 | 20 kg |
| 小臂的额定附加负载 | 10 kg |
| 小臂的最大附加负载 | 10 kg |
| 负载重心额定距离 | |
| L_{xy} | 100 mm |
| L_z | 120 mm |

地基负载

| | |
|---------------|---------|
| 纵向动力 $F(v)$ | |
| $F(v)$ 正常) | 3400 N |
| $F(v_{max})$ | 4600 N |
| 横向动力 $F(h)$ | |
| $F(h)$ 正常) | 1650 N |
| $F(h_{max})$ | 5200 N |
| 倾覆力矩 $M(k)$ | |
| $M(k)$ 正常) | 3250 Nm |
| $M(k_{max})$ | 5200 Nm |
| 轴 2 转矩 $M(r)$ | |
| $M(r)$ 正常) | 2550 Nm |
| $M(r_{max})$ | 4200 Nm |

垂直力 $F(v)$ 、水平力 $F(h)$ 、倾斜力矩 $M(k)$ 、轴 1 的转矩 $M(r)$

关税信息

| | |
|------|----------|
| 统计货号 | 84795000 |
| 原产地 | DE |
| 制造商 | - |
| 重量 | 254 kg |

-
- > **KR 20-3 C** 带有如下的工具 (5)
 - > **KR 20-3 C** 有以下选项 (27)
 - > **KR 20-3 C** 带有如下的标准组件 (2)
 - > **KR 20-3 C** 需要 (13)
 - > **KR 20-3 C** 带有如下的备件 (13)